

---

# **grafana-pcp Documentation**

***Release 5.0.0***

**Performance Co-Pilot**

**Jun 30, 2022**



<b>1</b>	<b>Features</b>	<b>3</b>
<b>2</b>	<b>Getting started</b>	<b>5</b>
2.1	Quickstart . . . . .	5
2.2	Installation . . . . .	6
2.3	Screenshots . . . . .	8
2.4	Architecture . . . . .	14
2.5	Change Log . . . . .	15
2.6	Overview . . . . .	23
2.7	Authentication . . . . .	24
2.8	PCP Redis . . . . .	25
2.9	PCP Vector . . . . .	26
2.10	PCP bpftrace . . . . .	27
2.11	Multiple Vector Hosts . . . . .	28
2.12	Monitoring Containers . . . . .	29
2.13	Troubleshooting . . . . .	30



**Performance Co-Pilot (PCP)** provides a framework and services to support system-level performance monitoring and management. It presents a unifying abstraction for all of the performance data in a system, and many tools for interrogating, retrieving, and processing that data.



# CHAPTER 1

---

## Features

---

- analysis of historical PCP metrics using `pmseries` query language
- analysis of real-time PCP metrics using `pmwebapi` live services
- enhanced Berkeley Packet Filter (eBPF) tracing using `bpfftrace` scripts
- dashboards for detecting potential performance issues and show possible solutions with the checklist dashboards, using the `USE method` [2]
- full-text search in metric names, descriptions, instances [1]
- support for `Grafana Alerting` [1]
- support for `derived metrics` (allows the usage of arithmetic operators and statistical functions inside a query) [2]
- automated configuration of metric units [1,2,3]
- automatic rate and time utilization conversion
- heatmap, table [2,3] and flame graph [3] support
- auto-completion of metric names [1,2], qualifier keys and values [1], and bpfftrace probes, builtin variables and functions [3]
- display of semantics, units and help texts of metrics [2] and bpfftrace builtins [3]
- legend templating support with `$metric`, `$metric0`, `$instance`, `$some_label`, `$some_dashboard_variable`
- container support [1,2]
- support for custom endpoint and hosts spec per panel [2,3]
- support for repeated panels
- sample dashboards for all data sources

[1] PCP Redis [2] PCP Vector [3] PCP bpfftrace





- *Quickstart*
- *Installation*

## 2.1 Quickstart

### 2.1.1 Installation

Please see the *Installation Guide*. There is a simple method using the package manager for Red Hat-based distributions, otherwise it can be installed from source, from a pre-built plugin bundle from the project's GitHub releases page, or as a container.

Make sure to restart Grafana server and pmproxy after installation the plugin. Eg.

```
$ sudo systemctl restart grafana-server
$ sudo systemctl start pmproxy
```

Installation is not finished until you also enable the Performance Co-Pilot plugin via the Grafana Admin configuration:

Open the Grafana configuration, go to Plugins, select *Performance Co-Pilot* and click the *Enable* button on it's page. This will make the PCP data sources and some dashboards available.

### 2.1.2 Data Sources

Before using grafana-pcp, you need to configure the data sources. Open the Grafana configuration, go to Data Sources and add the *PCP Redis*, *PCP Vector* and/or *PCP bpfftrace* data sources.

The only required configuration field for each data source is the URL to *pmproxy*. In most cases the default URL `http://localhost:44322` can be used. All other fields can be left to their default values.

Each data source includes one or more pre-defined dashboards. You can import them by navigating to the *Dashboards* tab on top of the settings and clicking the *Import* button next to the dashboard name.

---

**Note:** Make sure the *URL* text box actually contains a value (font color should be white) and you're not looking at the placeholder value (light grey text).

---

---

**Note:** The Redis and bpftrace data sources need additional configuration on the collector host. See *PCP Redis* and *PCP bpftrace*.

---

## 2.1.3 Dashboards

After installing grafana-pcp and configuring the data sources, you're ready to open the pre-defined dashboards (see above) or create new ones. Each data source comes with a few pre-defined dashboards, showing most of the respective functionality. Further information on each data source and the functionality can be found in the *Data Sources* section.

## 2.2 Installation

### 2.2.1 Minimum Software Requirements

PCP	Redis	Grafana	grafana-pcp
5.2+	5+	7.x	3.x
5.2+	5+	8.x	4.x

Note: Redis is only required for the *PCP Redis* data source.

### 2.2.2 Distribution Package

Distribution Package is the recommended method of installing grafana-pcp.

#### Fedora

```
$ sudo dnf install grafana-pcp
$ sudo systemctl restart grafana-server
```

### 2.2.3 GitHub Release

If there is no package available for your distribution, you can install a release from GitHub. Replace X.Y.Z with the version of grafana-pcp you wish to install.

```
$ wget https://github.com/performancecopilot/grafana-pcp/releases/download/vX.Y.Z/
↳ performancecopilot-pcp-app-X.Y.Z.zip
$ sudo unzip -d /var/lib/grafana/plugins performancecopilot-pcp-app-X.Y.Z.zip
$ sudo systemctl restart grafana-server
```

## 2.2.4 Container

You can also run Grafana with grafana-pcp in a container, using podman or docker. Keep in mind that with the default configuration, every container has its own isolated network, and you won't be able to reach pmproxy through localhost. Replace X.Y.Z with the version of grafana-pcp you wish to install.

```
$ podman run \
  -e GF_INSTALL_PLUGINS="https://github.com/performancecopilot/grafana-pcp/releases/
↳download/vX.Y.Z/performancecopilot-pcp-app-X.Y.Z.zip;performancecopilot-pcp-app" \
  -p 3000:3000 \
  docker.io/grafana/grafana
```

```
$ docker run \
  -e GF_INSTALL_PLUGINS="https://github.com/performancecopilot/grafana-pcp/releases/
↳download/vX.Y.Z/performancecopilot-pcp-app-X.Y.Z.zip;performancecopilot-pcp-app" \
  -p 3000:3000 \
  grafana/grafana
```

## 2.2.5 From Source

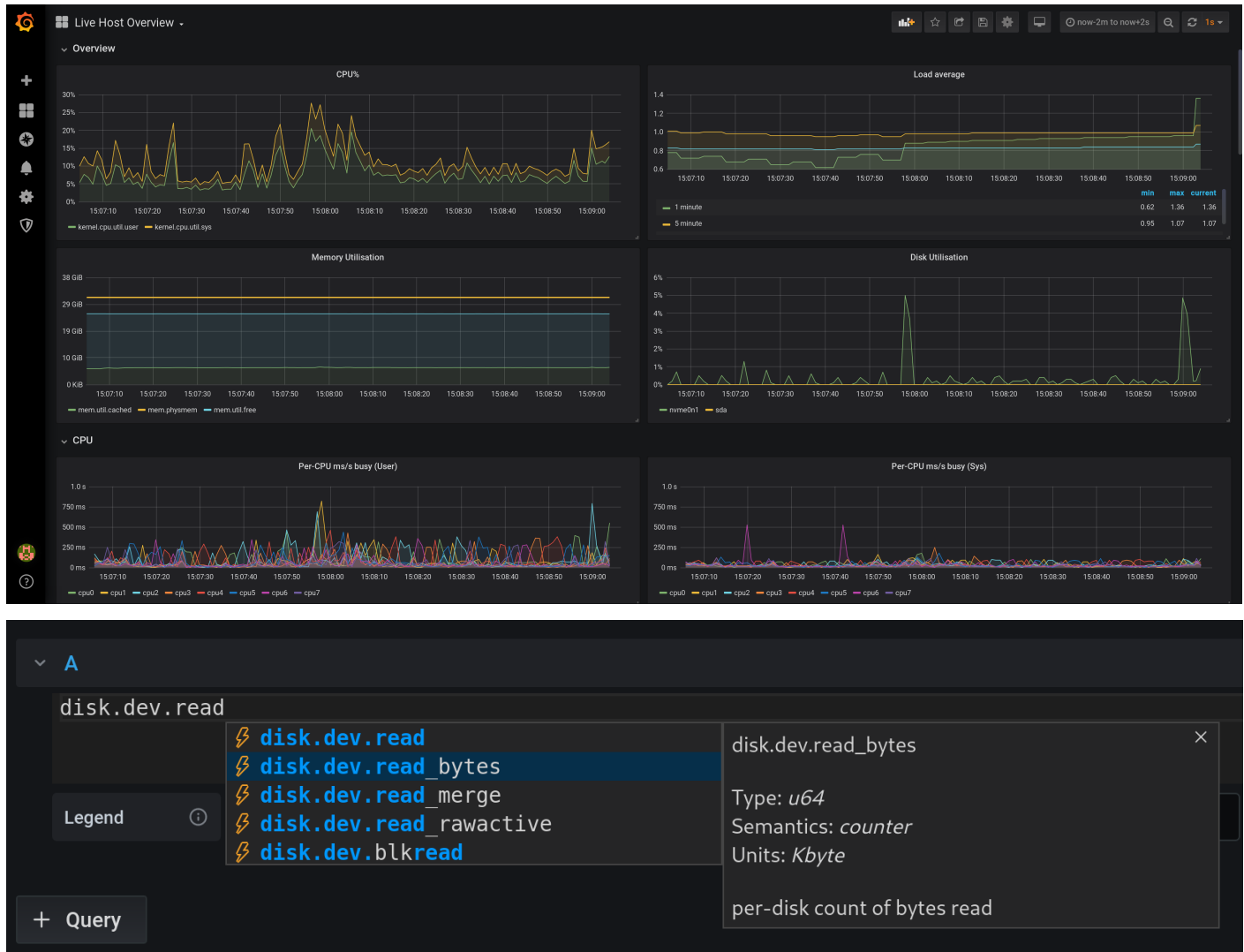
The yarn package manager, Go compiler, jsonnet and jsonnet bundler are required to build grafana-pcp.

```
$ git clone https://github.com/performancecopilot/grafana-pcp.git
$ make build
$ sudo ln -s $(pwd) /var/lib/grafana/plugins
$ sudo sed -i 's/allow_loading_unsigned_plugins =/allow_loading_unsigned_plugins =
↳performancecopilot-pcp-app,performancecopilot-redis-datasource,performancecopilot-
↳vector-datasource,performancecopilot-bpftrace-datasource,performancecopilot-
↳flamegraph-panel,performancecopilot-breadcrumbs-panel,performancecopilot-
↳troubleshooting-panel/' /etc/grafana/grafana.ini
$ sudo systemctl restart grafana-server
```

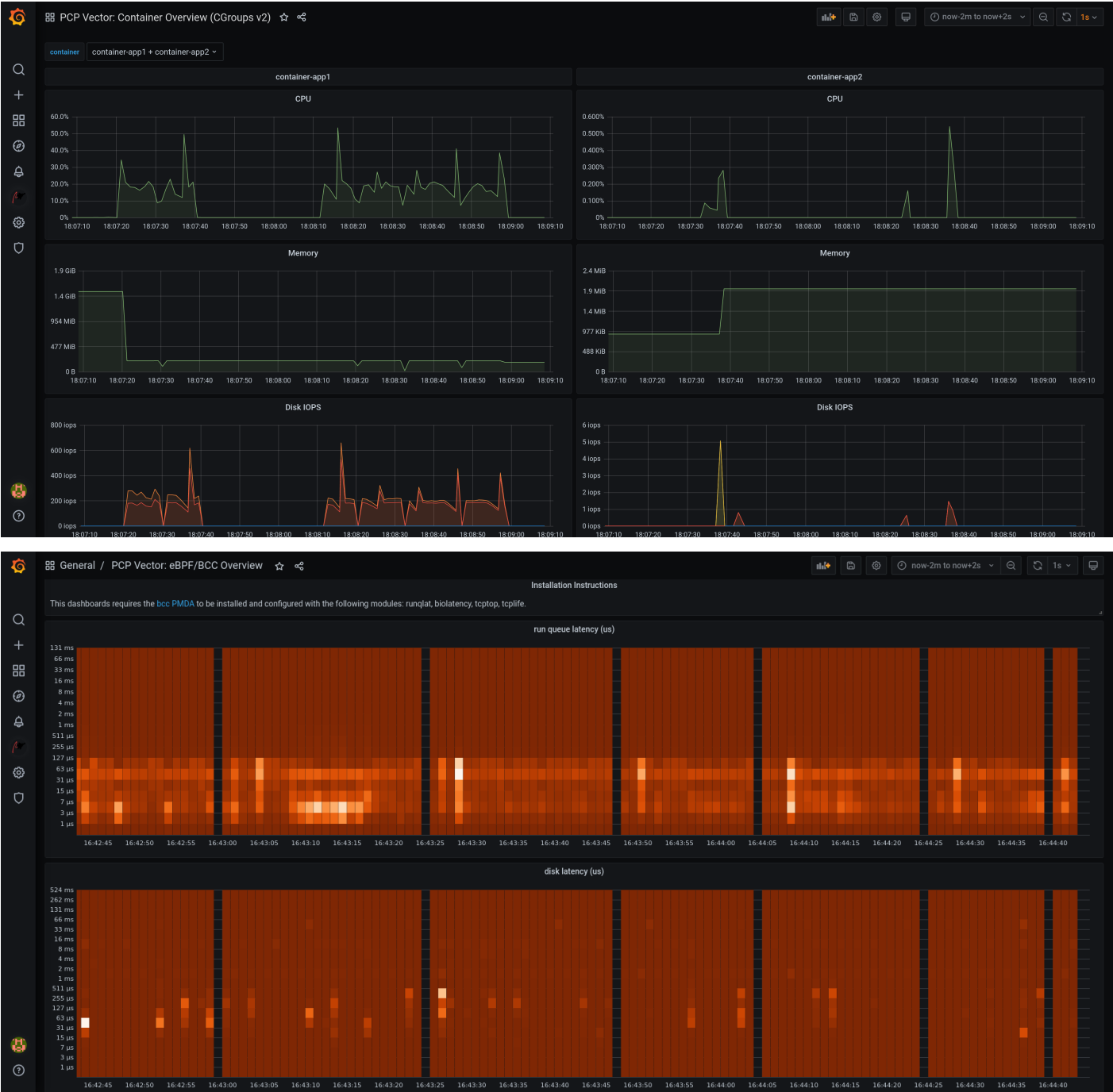
To list all available Makefile targets, run `make help`.

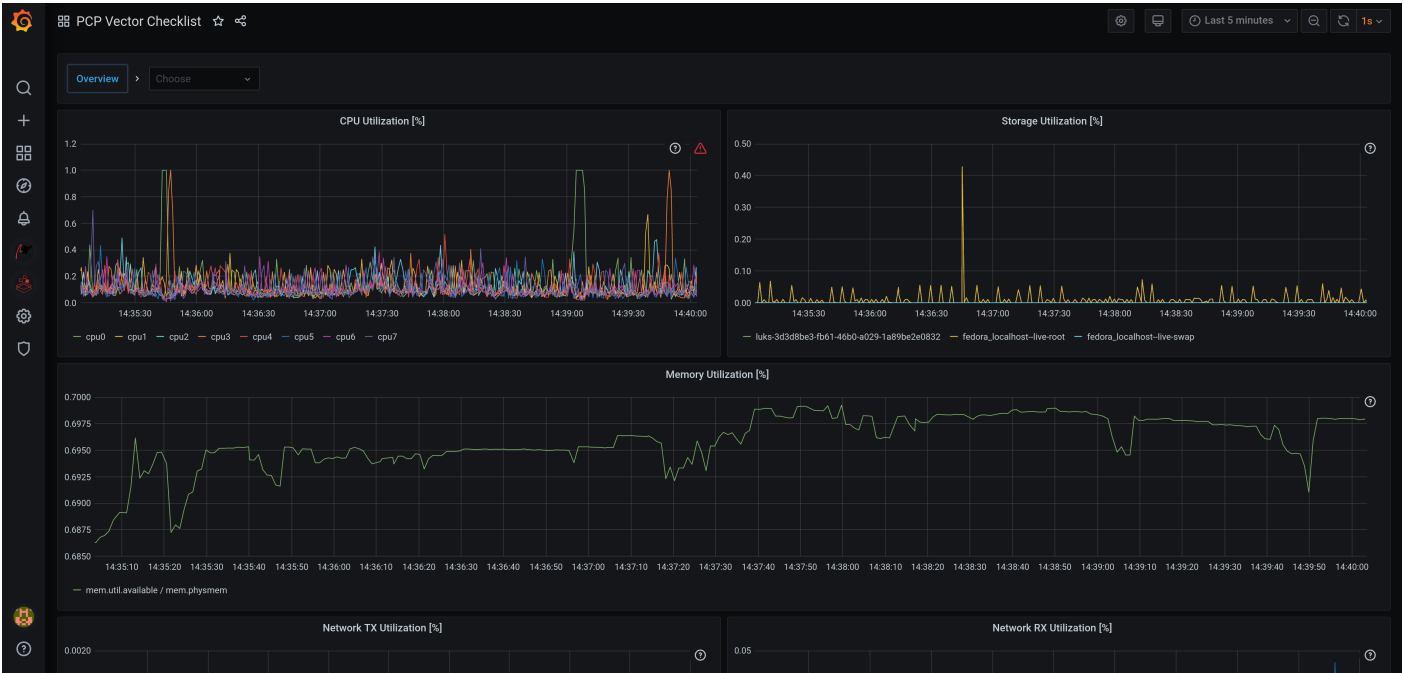
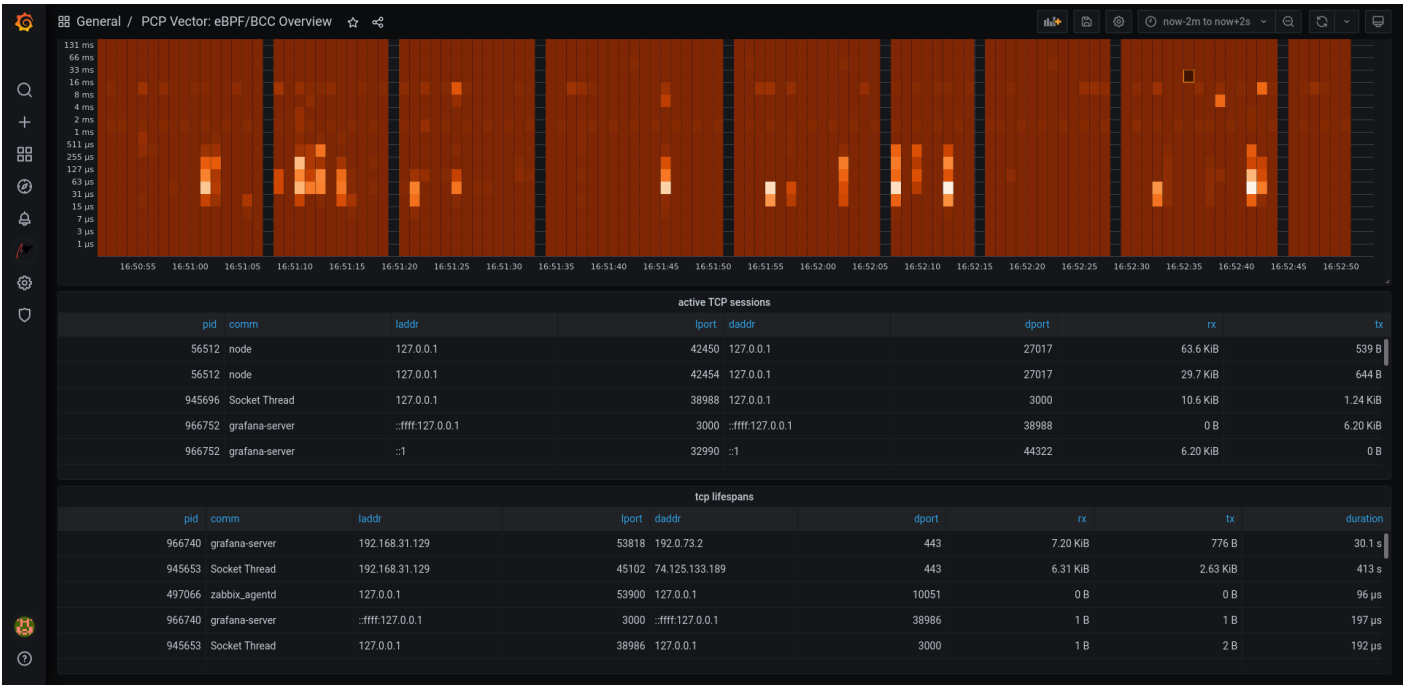
## 2.3 Screenshots

### 2.3.1 PCP Vector

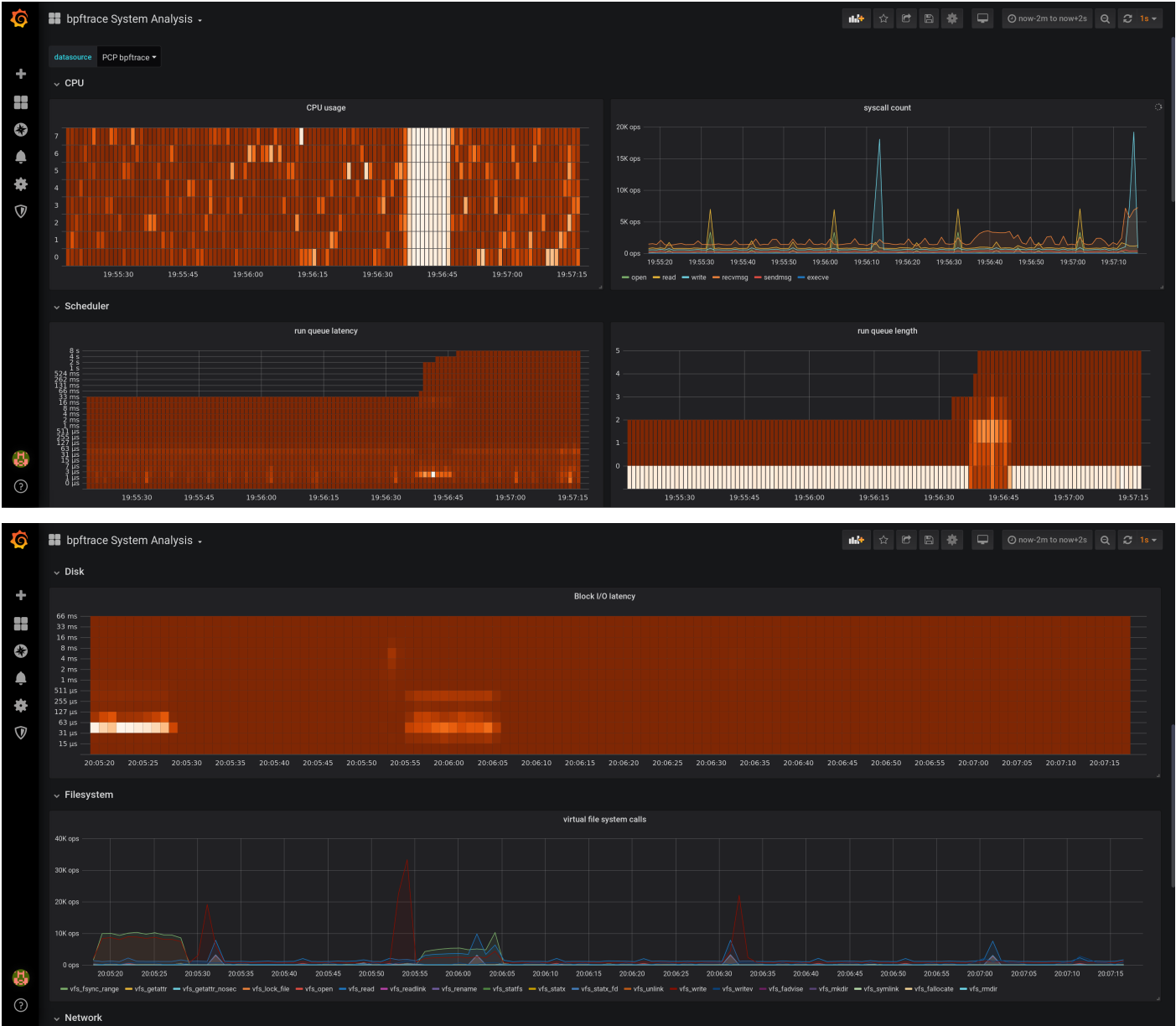


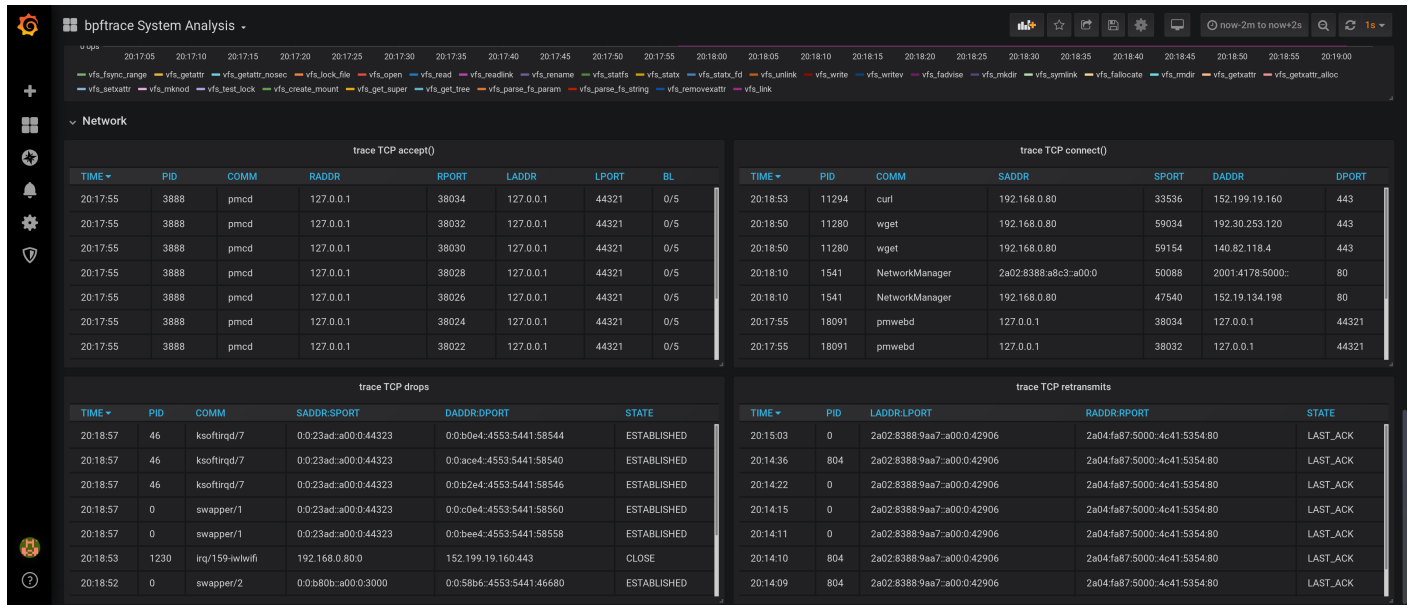
Vector dashboards





2.3.2 PCP bpfftrace





## bpftrace code editor

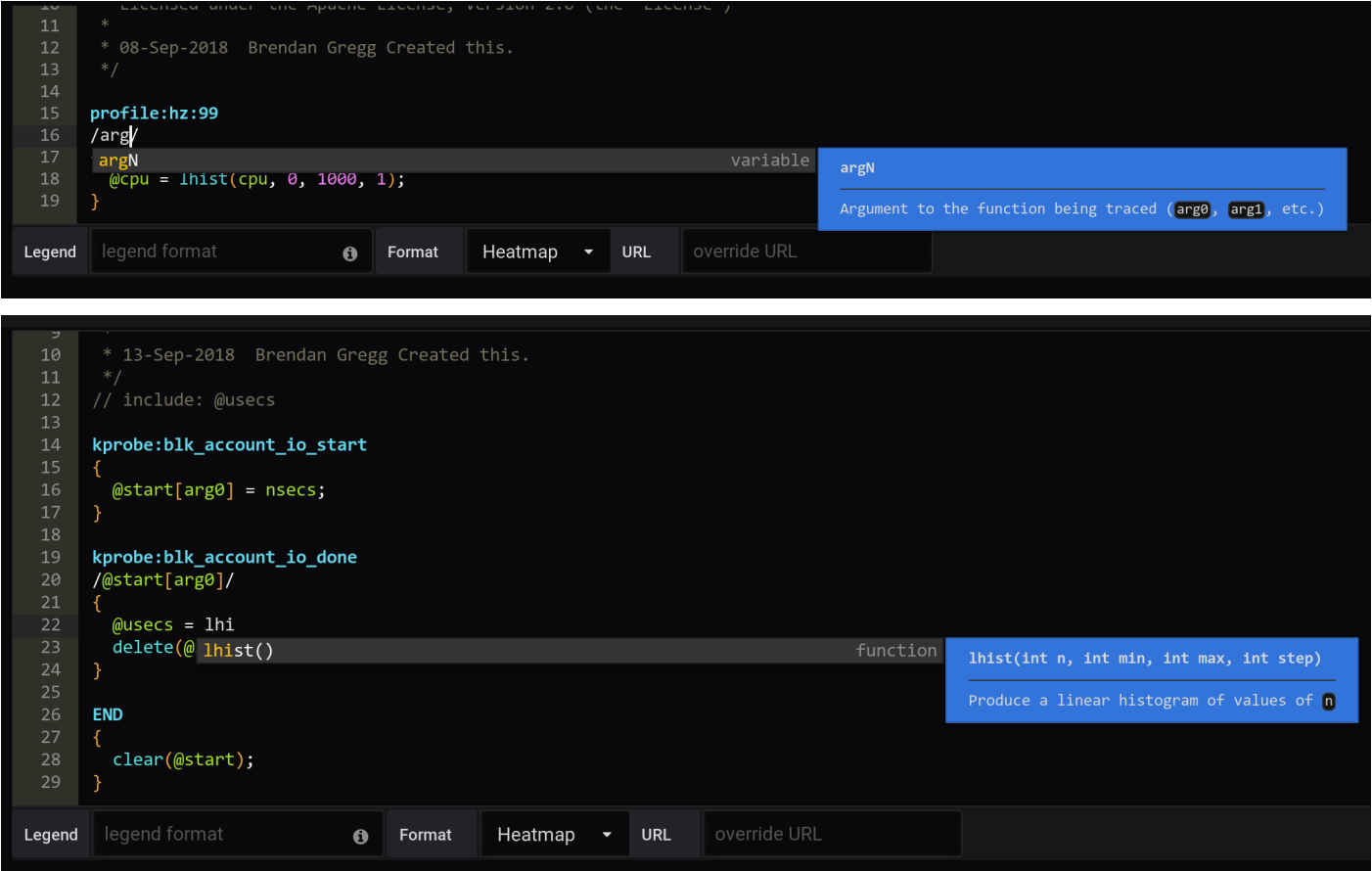
```

15
16 tracepoint:sched:sched_wakeup, tracepoint:sched:sched_
17 {
18     @qtime[args->pid] = nsecs;
19 }
20
21 tracepoint:sched:sched_switch
22 {
23     if (args->prev_state == TASK
24         @qtime[args->prev_pid] = n
25     }
26
27     $ns = @qtime[args->next_pid];
28     if ($ns) {
29         @usecs = hist((nsecs - $ns) / 1000);
30     }
31     delete(@qtime[args->next_pid]);
32 }
33
34 END
35 {

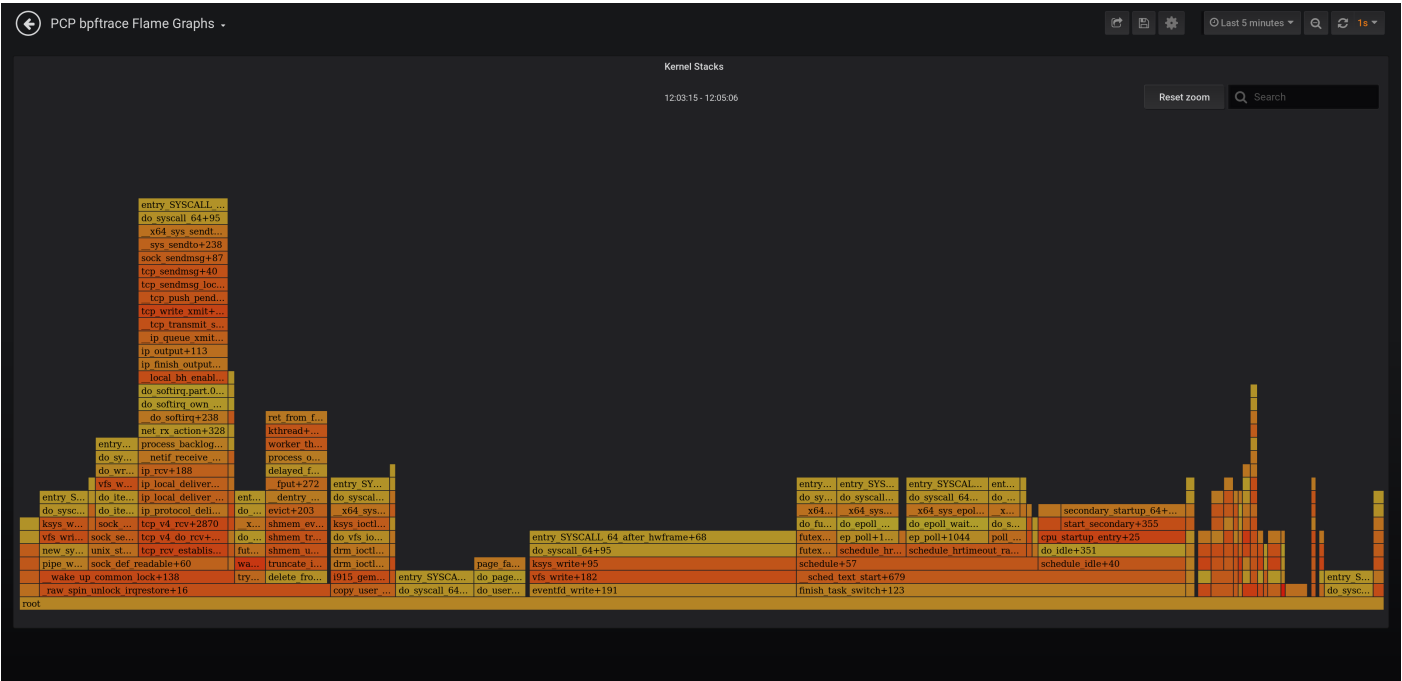
```

Legend legend format Format Heatmap URL override URL

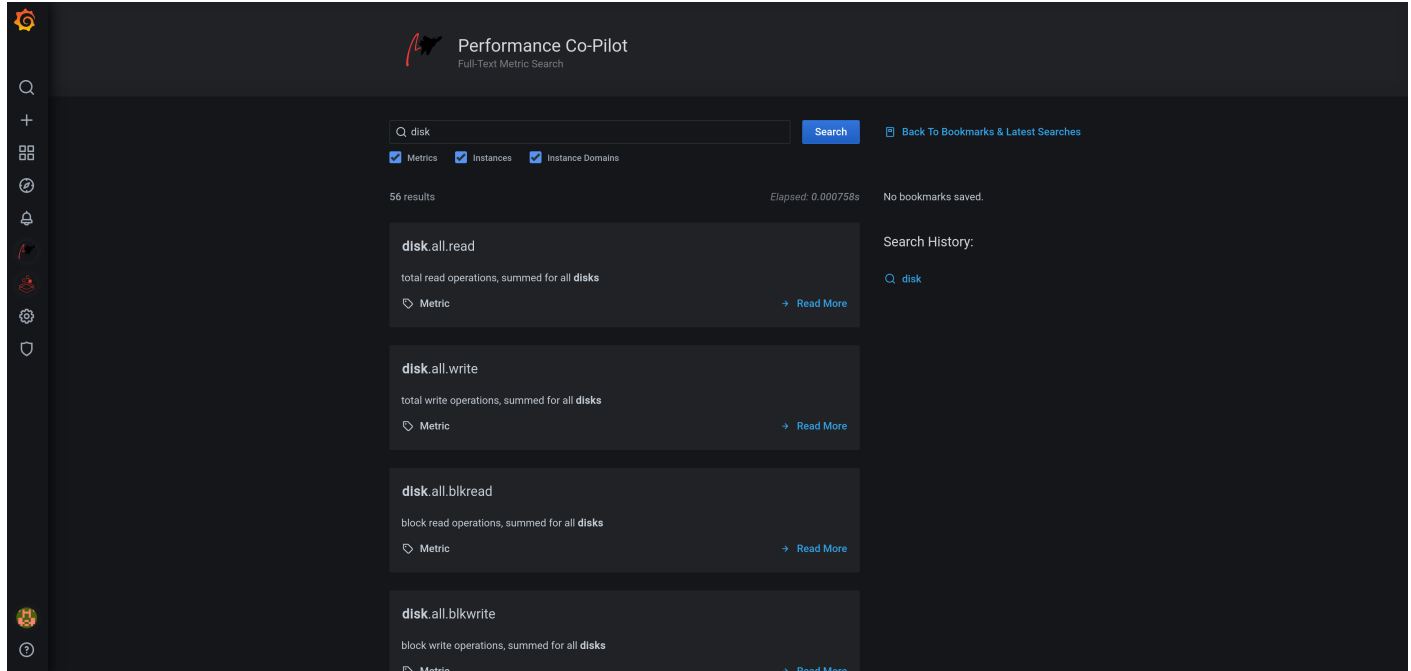




bpftrace flame graphs



### 2.3.3 Metric Search



## 2.4 Architecture

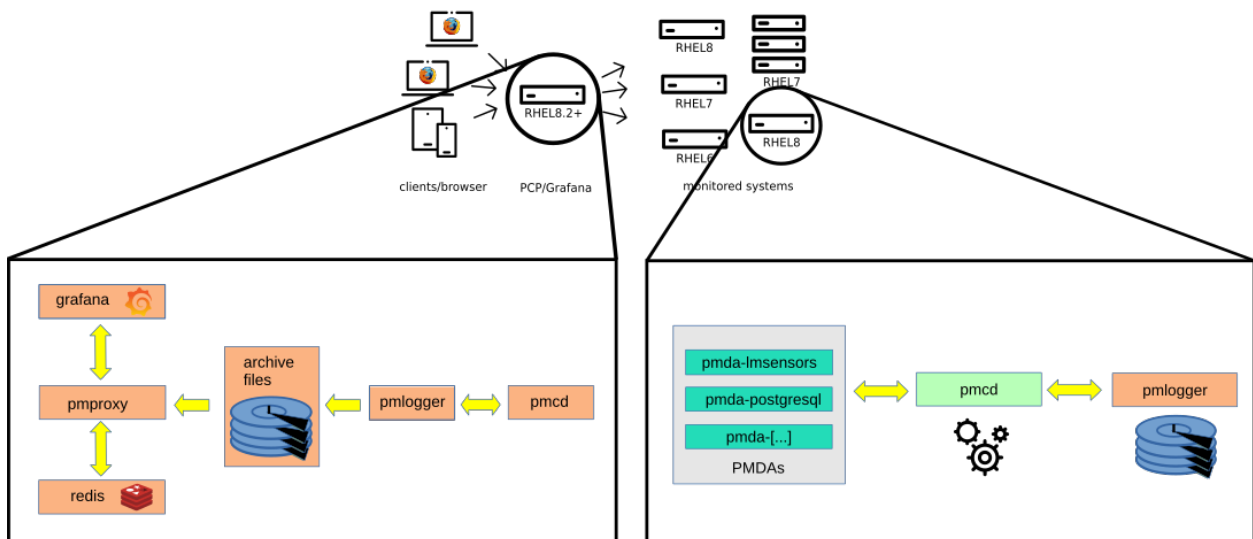


Fig. 1: © Christian Horn

### 2.4.1 Monitored Hosts

Monitored hosts run the **Performance Metrics Collector Daemon (PMCD)**, which communicates with one or many **Performance Metrics Domain Agents (PMDAs)** on the same host. Each **PMDA** is responsible for gathering met-

rics of one specific domain - e.g., the kernel, services (e.g., PostgreSQL), or other instrumented applications. The **pmlogger** daemon records metrics from **pmcd** and stores them in archive files on the hard drive.

Since **PCP 5** metrics can also be stored in the redis database, which allows multi-host performance analysis, the **pmproxy** daemon discovers new archives (created by **pmlogger**) and stores them in a redis database.

## 2.4.2 Dashboards

Performance Co-Pilot metrics can be analyzed with Grafana dashboards, using the **grafana-pcp** plugin. There are two modes available:

- historical metrics across multiple hosts using the *PCP Redis* data source
- live, on-host metrics using the *PCP Vector* data source

The *PCP Redis* data source sends *pmseries* queries to **pmproxy**, which in turn queries the redis database for metrics. The *PCP Vector* data source connects to **pmproxy**, which in turn requests live metrics directly from a local or remote **PMCD**. In this case, metrics are stored temporarily in the browser, and metric values are lost when the browser tab is refreshed. The *PCP Redis data source* is required for persistence.

## 2.5 Change Log

### 2.5.1 5.0.0 (2022-06-30)

#### Important: Upgrade instructions

Due to a breaking change (see section below), the following instructions are required before upgrading to grafana-pcp v5:

- Go to Configuration -> Data sources and delete any PCP Redis, PCP Vector or PCP bpfttrace data sources
- Go to Configuration -> Plugins, select the Performance Co-Pilot app and click the Disable button
- Go to Dashboards -> Browse and delete any remaining dashboards installed by grafana-pcp
- If you installed grafana-pcp through the RPM package, open the `/etc/grafana/grafana.ini` configuration file and update the following setting:  
`allow_loading_unsigned_plugins = performancecopilot-pcp-app, performancecopilot-redis-datasource, performancecopilot-vector-datasource, performancecopilot-bpfttrace-datasource, performancecopilot-flamegraph-panel, performancecopilot-breadcrumbs-panel, performancecopilot-troubleshooting-panel`
- Perform the upgrade to grafana-pcp v5
- Enable the plugin, setup all data sources and import all dashboards again
- If you have custom dashboards, update all panels with the correct data source

#### Enhancements / Bug Fixes

- **all:** rename plugin IDs from `pcp-***` to `performancecopilot-***`
- **all:** remove `window.setGrafanaPcpLogLevel()` debug function
- **chore:** remove deprecated `dependencies.grafanaVersion` field from plugin metadata
- **docs:** update spelling of `datasource` to `data source`

## Breaking Changes

- the internal plugin IDs of the data source and panel plugins were renamed from `pcp-X-Y` to `performancecopilot-X-Y`, for example `pcp-redis-datasource` was renamed to `performancecopilot-redis-datasource` in order to conform to the Grafana plugin id naming conventions

## 2.5.2 4.0.0 (2022-06-29)

### Enhancements / Bug Fixes

- **redis, vector:** add buttons to disable rate conversation and time utilization conversation
- **redis:** use LRU cache for series metadata
- **redis:** fix `label_names()` function to return all label names if no parameter is specified (now the label name auto-completion in the query editor works again)
- **redis:** remove deprecated `label_values(metric, label)` function
- **redis:** fix network error for metrics with many series (requires PCP v6+)
- **redis:** update debug logging messages
- **bpfftrace:** disable scrolling beyond last line in query editor
- **checklist:** fix dashboard link in navigation bar
- **chore:** upgrade Grafana dependencies to version 8.5.6
- **chore:** refactor custom Monaco languages
- **chore:** use new `@grafana/ui` form components in query editor
- **build:** verify javascript size in Makefile
- **test:** add datasource, metric auto-completion and import dashboard tests
- **ci:** switch e2e tests to cypress, use matrix configuration to run them with multiple Grafana versions

### Removed features

- **redis:** The `label_values(metric, label)` Grafana variable query function is now removed (was deprecated since grafana-pcp v3)

## 2.5.3 3.2.1 (2021-11-24)

- **dashboards:** add note about incompatibility of checklist dashboards with Grafana v8
- **search:** fix metric search form to make it compatible with Grafana v8

## 2.5.4 3.2.0 (2021-11-11)

- **dashboards:** new MS SQL server dashboard for PCP Redis
- **dashboards:** do not hide empty buckets in PCP Vector eBPF/BCC Overview dashboard
- **dashboards:** set revision for all dashboards

- **redis**: utilize query.options settings, same as PCP Vector
- **redis**: fix metric() function to return all metric names if no parameter is specified
- **vector**: perform rate conversion only if it's enabled in the query options (it is by default)
- **build**: add workaround to replace deprecated md4 hash algorithm with sha256 during build (md4 is unavailable in OpenSSL 3.0)
- **build**: update Node.js and Go dependencies, and grafonnet
- **build**: double-zip build artifacts in the CI workflow to preserve permissions (see [actions/upload-artifact#38](#))
- **build**: add zip Makefile target, run grafana/plugincheck in CI workflow
- **docs**: add PCP Vector eBPF/BCC Overview dashboard screenshots

### 2.5.5 3.1.0 (2021-06-25)

- **checklist**: use new GraphNG component, show units in graphs, update help texts
- **all**: ensure Grafana 8.0 compatibility by replacing Angular.js based plugin config component with React
- **dashboards**: add pmproxy URL and hostspec variables to PCP Vector Host Overview and PCP checklist dashboards
- **dashboards**: show datasource field on all dashboards
- **dashboards**: mark all dashboards as readonly
- **bpfftrace**: fix bpfftrace error messages (don't append errors indefinitely)
- **vector, bpfftrace**: use `pcp://127.0.0.1` as default hostspec (no functional change)
- **chore**: update dependencies
- **test**: replace convey with testify for the Go tests

### 2.5.6 3.0.3 (2021-02-24)

- **test**: fix e2e tests by using another CSS selector
- **chore**: update dependencies
- **docs**: add container guide and screenshot

### 2.5.7 3.0.2 (2021-01-22)

- **checklist**: replace the storage metrics `disk.dm.*` with `disk.dev.*` (enables usage without device mapper)

### 2.5.8 3.0.1 (2020-12-22)

#### Enhancements / Bug Fixes

- **redis**: add auto-completions for new pmseries(1) language functions
- **redis, vector**: show error messages returned by the REST API
- **vector, bpfftrace**: fix error messages regarding missing metrics

- **vector**: register derived metrics for every context
- **vector**: handle missing metric metadata responses
- **checklist**: fix metric name in storage warning dialog
- **test**: fix PCP Redis datasource test on 32bit architectures
- **build**: update dependencies

## 2.5.9 3.0.0 (2020-11-23)

### Highlights of v3.0

- **redis**: support for [Grafana Alerting](#)
- **redis**: full-text search in metric names, descriptions, instances
- **vector**: support derived metrics, which allows the usage of arithmetic operators and statistical functions inside a query (`pmRegisterDerived(3)`)
- **vector**: configurable hostspec (access remote PMCDs through a central pmproxy)
- **vector**: automatically configure the unit of the panel
- **dashboards**: detect potential performance issues and show possible solutions with the checklist dashboards, using the [USE method](#)
- **dashboards**: new MS SQL server dashboard (Louis Imershein)
- **dashboards**: new eBPF/BCC dashboard
- **dashboards**: new container overview dashboard with CGroups v2

### Breaking Changes in v3.0

- **dashboards**: All dashboards are now located in the *Dashboards* tab at the datasource settings pages and are not imported automatically
- **redis**: Using `label_values(metric, label)` in a Grafana variable query is deprecated due to performance reasons. `label_values(label)` is still supported.

### New Features

- **redis**: added instance.name and dashboard variables support in query editor
- **redis**: heatmap support
- **dashboards**: updated PCP Redis Metric Preview dashboards: added metric drop-down
- **dashboards**: added MS SQL server dashboard for Vector (Louis Imershein)
- **chore**: sign plugin

## Enhancements / Bug Fixes

- **redis**: implement workaround if two values for the same instance and timestamp are received
- **redis**: send one instance labels request instead of one per instance
- **redis**: refresh instances only once per series
- **redis**: improved error messages
- **vector**: (internal) option to disable time utilization conversion
- **vector**: show error message when access mode is set to server & url override is set
- **vector**: disable redis backfill for now (pmseries and pmapi instance id's don't match)
- **bpfftrace**: interpret all fields of CSV output as strings
- **dashboards**: moved dashboards to the datasource level: dashboards of interest can be imported using the dashboards tab of each datasource settings page
- **dashboards**: fix KB/s unit in dashboards, should be KiB/s
- **dashboards**: add installation instructions to BCC and bpfftrace dashboards
- **dashboards**: update titles and add units to checklist dashboards
- **search**: fix datasource detection
- **search**: propagate error messages to the user
- **poller**: use timeout instead of interval to prevent overlapping timers
- **poller**: deregister targets immediately if endpoint changed
- **chore**: update build dependencies
- **test**: add unit tests to all datasources
- **test**: add End-to-End tests
- **docs**: update authentication guide to use scram-sha-256

### 2.5.10 3.0.0-beta1 (2020-10-12)

#### New Features

- **redis**: support for [Grafana Alerting](#)
- **redis**: full-text search in metric names, descriptions, instances
- **vector**: support derived metrics, which allows the usage of arithmetic operators and statistical functions inside a query, [see pmRegisterDerived\(3\)](#)
- **vector**: set background metric poll interval according to current dashboard refresh interval, do not stop polling while in background
- **vector**: automatically configure the unit of the panel
- **vector**: redis backfilling: if redis is available, initialize the graph with historical data
- **vector**: configurable hostspec (access remote PMCDs through a central pmproxy)
- **vector**: access context, metric, instancedomain and instance labels

- **dashboards:** checklist dashboard: detects potential performance issues and shows possible solutions to resolve them
- **dashboards:** eBPF/BCC dashboard
- **dashboards:** container overview dashboard with CGroups v2

## Enhancements / Bug Fixes

- **build:** convert dashboards to jsonnet/grafonnet
- **all:** use latest Grafana UI components based on React (Grafana previously used Angular)

## Redis datasource installation

Unfortunately it is [not possible to sign community plugins at the moment](#). Therefore the PCP Redis datasource plugin needs to be allowed explicitly in the Grafana configuration file:

```
allow_loading_unsigned_plugins = pcp-redis-datasource
```

Restart Grafana server, and check the logs if the plugin loaded successfully.

## Deprecated features

- **redis:** Using `label_values(metric, label)` in a Grafana variable query is deprecated due to performance reasons. `label_values(label)` is still supported.

### 2.5.11 2.0.2 (2020-02-25)

- **vector, redis:** remove autocompletion cache (PCP metrics can be added and removed dynamically)

### 2.5.12 2.0.1 (2020-02-17)

- **build:** fix production build (implement workaround for [systemjs/systemjs#2117](#), [grafana/grafana#21785](#))

### 2.5.13 2.0.0 (2020-02-17)

- **vector, bpfftrace:** fix version checks on dashboard load (prevent multiple `pmcd.version` checks on dashboard load)
- **vector, bpfftrace:** change datasource check box to red if URL is inaccessible
- **redis:** add tests
- **flame graphs:** support multidimensional eBPF maps (required to display e.g. the process name)
- **dashboards:** remove BCC metrics from Vector host overview (because the BCC PMDA isn't installed by default)
- **misc:** update dependencies



### 2.5.14 2.0.0-beta1 (2019-12-12)

- support Grafana 6.5+, drop support for Grafana < 6.5

### 2.5.15 1.0.7 (2020-01-29)

- **redis:** fix timespec (fixes empty graphs for large time ranges)

### 2.5.16 1.0.6 (2020-01-07)

- **redis:** support wildcards in metric names (e.g. `disk.dev.*`)
- **redis:** fix label support
- **redis:** fix legends

### 2.5.17 1.0.5 (2019-12-16)

- **redis:** set default sample interval to 60s (fixes empty graph borders)
- **build:** upgrade `copy-webpack-plugin` to mitigate XSS vulnerability in the `serialize-javascript` transitive dependency
- **build:** remove deprecated `uglify-webpack-plugin`

### 2.5.18 1.0.4 (2019-12-11)

#### Enhancements

- **flame graphs:** clean flame graph stacks every 5s (reduces CPU load)
- **general:** implement PCP version checks

#### Bug Fixes

- **build:** remove `weak` dependency (doesn't work with Node.js 12)
- **build:** upgrade `terser-webpack-plugin` to mitigate XSS vulnerability in the `serialize-javascript` transitive dependency

### 2.5.19 1.0.3 (2019-11-22)

- fix flame graph dependency (`flamegraph.destroy` error in javascript console)

### 2.5.20 1.0.2 (2019-11-12)

- handle counter wraps (overflows)
- convert time based counters to time utilization

## 2.5.21 1.0.1 (2019-10-24)

### Flame Graphs

- aggregate stack counts by selected time range in the Grafana UI
- add an option to hide idle stacks

### Vector

- fix container dropdown in the query editor
- remove container setting from the datasource settings page

### Redis

- fix value transformations (e.g., rate conversion of counters)

### All

- request more datapoints from the datasource to fill the borders of the graph panel

## 2.5.22 1.0.0 (2019-10-11)

### bpfftrace

- support for Flame Graphs
- context-sensitive auto-completion for bpfftrace probes, builtin variables, and functions incl. help texts
- parse the output of bpfftrace scripts (e.g., using `printf()`) as CSV and display it in the Grafana table panel
- sample dashboards (BPFtrace System Analysis, BPFtrace Flame Graphs)

### Vector

- table output: show instance name in the left column
- table output: support non-matching instance names (cells of metrics which don't have the specific instance will be blank)

### Vector & bpfftrace

- if the metric/script gets changed in the query editor, immediately stop polling the old metric/deregister the old script
- improve pmwebd compatibility

## miscellaneous

- help texts for all datasources (visible with the [ ? ] button in the query editor)
- renamed PCP Live to PCP Vector
- logos for all datasources
- improved error handling

### 2.5.23 0.0.7 (2019-08-16)

- The initial release of grafana-pcp

## Features

- retrieval of Performance Co-Pilot metrics from pmseries (PCP Redis), pmproxy, and pmwebd (PCP Live)
- automatic rate conversion of counter metrics
- auto-completion of metric names 1,2, qualifier keys, and values 2
- display of semantics, units, and help texts of metrics 1
- legend templating support with `$metric`, `$metric0`, `$instance`, `$some_label`
- container support
- support for repeating panels
- support for custom endpoint URL and container setting per query, with templating support 1
- heatmap and table support 1
- sample dashboards for PCP Redis and PCP Live

1 PCP Live 2 PCP Redis

## Known Bugs

- the bpftrace datasource is work-in-progress and will be ready with the next release (approx. 1-2 weeks)

Thanks to Jason Koch for the initial pcp-live datasource implementation and the host overview dashboard.

## 2.6 Overview

### 2.6.1 PCP Redis

This data source queries the fast, scalable time series capabilities provided by the `pmseries` functionality. It is intended to query **historical** data across **multiple hosts** and supports filtering based on labels.

### 2.6.2 PCP Vector

The PCP Vector data source shows **live, on-host metrics** from the real-time `pmwebapi` interfaces. It is intended for an individual host, on-demand performance monitoring, and includes container support.

## 2.6.3 PCP bpftrace

The PCP bpftrace data source supports system introspection using [bpftrace](#) scripts. It connects to the bpftrace PMDA and runs bpftrace scripts on the host.

## 2.7 Authentication

Performance Co-Pilot supports the following authentication mechanisms through the SASL authentication framework: plain, login, digest-md5, scram-sha-256 and gssapi. This guide shows how to setup authentication using the scram-sha-256 authentication mechanism and a local user database.

---

**Note:** Authentication methods login, digest-md5 and scram-sha-256 require PCP 5.1.0 or later.

---

### 2.7.1 Requisites

Install the following package, which provides support for the scram-sha-256 authentication method:

#### Fedora/CentOS/RHEL

```
$ sudo dnf install -y cyrus-sasl-scram
```

#### Debian/Ubuntu

```
$ sudo apt-get install -y libsasl2-modules-gssapi-mit
```

### 2.7.2 Configuring PMCD

First, open the `/etc/sasl2/pmc.d.conf` file and specify the supported authentication mechanism and the path to the user database:

```
mech_list: scram-sha-256
sasldb_path: /etc/pcp/passwd.db
```

Then create a new unix user (in this example `pcptestuser`) and add it to the user database:

```
$ sudo useradd -r pcptestuser
$ sudo saslpasswd2 -a pmcd pcptestuser
```

---

**Note:** For every user in the user database, a unix user with the same name must exist. The passwords of the unix user and the `/etc/pcp/passwd.db` database are not synchronized, and (only) the password of the `saslpasswd2` command is used for authentication.

---

Make sure that the permissions of the user database are correct (readable only by root and the pcp user):

```
$ sudo chown root:pcp /etc/pcp/passwd.db
$ sudo chmod 640 /etc/pcp/passwd.db
```

Finally, restart pmcd and pmproxy:

```
$ sudo systemctl restart pmcd pmproxy
```

### 2.7.3 Test Authentication

To test if the authentication is set up correctly, execute the following command:

```
$ pminfo -f -h "pcp://127.0.0.1?username=pcptestuser" disk.dev.read
```

### 2.7.4 Configuring the Grafana Data source

Go to the Grafana data source settings, enable **Basic auth**, and enter the username and password. Click the *Save & Test* button to check if the authentication is working.

---

**Note:** Due to security reasons, the access mode *Browser* is **not supported** with authentication.

---

## 2.8 PCP Redis

### 2.8.1 Introduction

This data source provides a native interface between [Grafana](#) and [Performance Co-Pilot \(PCP\)](#), allowing PCP metric data to be presented in Grafana panels, such as graphs, tables, heatmaps, etc. Under the hood, the data source makes REST API query requests to the PCP [pmproxy](#) service, which can be running either locally or on a remote host. The pmproxy daemon can be local or remote and uses the Redis time-series database (local or remote) for persistent storage.

### 2.8.2 Setup Redis and PCP daemons

```
$ sudo dnf install redis
$ sudo systemctl start redis pmlogger pmproxy
```

### 2.8.3 Query Language

Syntax: `[metric.name] '{metadata qualifiers}'`

Examples:

```
kernel.all.load
kernel.all.load{hostname == "web01"}
network.interface.in.bytes{agent == "linux"}
```

Documentation of the pmseries query language can be found in the [man page of pmseries](#).

## 2.8.4 Query Formats

### Time Series

Returns the data as time series. If there are multiple series for a metric, all series will be shown as separate targets (i.e., a line in a line graph). For metrics with instance domains, each instance is shown as a separate target. If there are multiple queries defined, all values will be combined in the same graph.

### Table

Transforms the data for the table panel. Two or more queries are required, and it will transform every metric into a column, and every instance into a row. The latest values of the currently selected timeframe will be displayed.

## 2.8.5 Legend Format Templating

The following variables can be used in the legend format box:

Variable	Description	Example
<code>\$expr</code>	query expression	<code>rate(disk.dm.avactive)</code>
<code>\$metric</code>	metric name	<code>disk.dev.read</code>
<code>\$metric0</code>	last part of metric name	<code>read</code>
<code>\$instance</code>	instance name	<code>sda</code>
<code>\$some_label</code>	label value	<code>anything</code>

## 2.8.6 Query Functions

The following functions are available for dashboard variables of type *Query*:

Function	Description	Example
<code>metrics([pattern])</code>	returns all metrics matching a glob pattern (if no pattern is defined, all metrics are returned)	<code>metrics(disk.*)</code>
<code>label_names([pattern])</code>	returns all label names matching a glob pattern (if no pattern is defined, all metrics are returned)	<code>label_names(host*)</code>
<code>label_values(label)</code>	returns all label values for the specified label	<code>label_values(hostname)</code>

## 2.9 PCP Vector

### 2.9.1 Query Formats

#### Time Series

Returns the data as time series. For metrics with instance domains, each instance is shown as a separate target (i.e., line in a line graph). If there are multiple queries defined, all values will be combined in the same graph.

## Heatmap

Transforms the data for the heatmap panel. Instance names have to be in the following format: `<lower_bound>-<upper_bound>`, for example, `512-1023` (the `bcc` PMDA produces histograms in this format).

The following settings have to be set in the heatmap panel options:

Setting	Value
<i>Format</i>	<b>Time Series Buckets</b>
<i>Bucket bound</i>	<b>Upper</b>

## Table

Transforms the data for the table panel. Two or more queries are required, and it will transform every metric into a column, and every instance into a row. The latest values of the currently selected timeframe will be displayed.

## 2.9.2 Legend Format Templating

The following variables can be used in the legend format box:

Variable	Description	Example
<code>\$expr</code>	query expression	<code>rate(disk.dm.avactive)</code>
<code>\$metric</code>	metric name	<code>disk.dev.read</code>
<code>\$metric0</code>	last part of metric name	<code>read</code>
<code>\$instance</code>	instance name	<code>sda</code>
<code>\$some_label</code>	label value	<code>anything</code>

## 2.10 PCP bpftrace

### 2.10.1 bpftrace PMDA installation

```
$ sudo dnf install pcp-pmda-bpftrace
$ cd /var/lib/pcp/pmdas/bpftrace
$ sudo ./Install
```

### 2.10.2 Query Formats

#### Time Series

Shows bpftrace variables as time series. For bpftrace maps, each key is shown as a separate target (i.e. line in a line graph), for example `@counts[comm] = count()`. If there are multiple variables (or scripts) defined, all values will be combined in the same graph.

## Heatmap

Transforms bpftrace histograms into heatmaps.

The following settings have to be set in the heatmap panel options:

Setting	Value
<i>Format</i>	<b>Time Series Buckets</b>
<i>Bucket bound</i>	<b>Upper</b>

## Table

Transforms CSV output of bpftrace scripts into a table. The first line must be the column names.

### 2.10.3 Legend Format Templating

The following variables can be used in the legend format box:

Variable	Description
<code>\$metric0</code>	bpftrace variable name
<code>\$instance</code>	bpftrace map key

### 2.10.4 More Information

[bpftrace PMDA README](#)

## 2.11 Multiple Vector Hosts

In cloud environments, it is often desired to use the Vector data source to connect to multiple remote hosts without configuring a new data source for each host. This guide shows a setup for this use case using [Grafana templates](#).

### 2.11.1 Setup the Vector data source

Open the Grafana configuration, go to Data Sources, and add the *PCP Vector* data source. Leave the URL field empty and select **Access: Browser**. Click the save button. A red alert will appear, with the text *To use this data source, please configure the URL in the query editor*.

### 2.11.2 Create a new dashboard variable

Create a new dashboard (plus icon in the left navigation - *Create - Dashboard*) and open the dashboard settings (wheel icon on the right, top navigation bar). Navigate to *Variables* and create a new variable with the following settings:

Setting	Value
Name	host
Type	Text box



Leave the other fields to their default values. Save the new variable, go back to the dashboard, enter a hostname (for example, `localhost`) in the text box, and press enter.

### 2.11.3 Create a new graph

Add a new graph to the dashboard, select the *PCP Vector* data source, enter a PCP metric name (for example `disk.dev.read_bytes`) in the big textbox, and enter `http://$host:44322` in the URL field. If you haven't already, select the time range to *last 5 minutes* and select the auto-refresh interval (top right corner) to 5 seconds, for example.

Now Grafana connects to `http://localhost:44322` for this panel (if you have entered `localhost` in the host textbox). By changing the value of the host text box, you can change the remote host.

### 2.11.4 Setting the host by query parameter

You can also set the host by an URL query parameter. Add `&var-host=example.com` to the current query, or update the `var-host` query parameter in case it is already present in the current query string.

## 2.12 Monitoring Containers

### 2.12.1 Importing the dashboards

grafana-pcp includes the following (optional) dashboards:

- PCP Vector: Container Overview (CGroups v1)
- PCP Vector: Container Overview (CGroups v2)

You can import the corresponding dashboard on the *PCP Vector* data source settings page.

---

**Note:** grafana-pcp before version 3.0.0 includes a single dashboard called **PCP Vector: Container Overview** which supports CGroups v1 only and is installed by default (i.e. no import is required).

---

### 2.12.2 Usage

You can choose one or multiple containers in the *container* drop-down field at the top of the dashboard:



## 2.12.3 Common Problems

### My container doesn't show up

- make sure that the docker and/or podman PMDAs are installed
- currently PCP only supports containers started by the root user (there is an [open feature request](#) to change this)

## 2.13 Troubleshooting

### 2.13.1 Common Problems

#### HTTP Error 502: Bad Gateway, please check the datasource and pmproxy settings

When I try to add a data source in Grafana, I get the following error: “HTTP Error 502: Bad Gateway, please check the datasource and pmproxy settings. To use this data source, please configure the URL in the query editor.”

- check if pmproxy is running: `systemctl status pmproxy`
- make sure that pmproxy was built with time-series (libuv) support enabled. You can verify that by reading the logfile in `/var/log/pcp/pmproxy/pmproxy.log`

### 2.13.2 PCP Redis

#### Grafana doesn't show any data

- Make sure that [pmlogger](#) is up and running, and writing archives to the disk (`/var/log/pcp/pmlogger/<host>/*`)

- Verify that `pmproxy` is running, time series support is enabled and a connection to Redis is established: check the logfile at `/var/log/pcp/pmproxy/pmproxy.log` and make sure that it contains the following text:  
Info: Redis slots, command keys, schema version setup
- Check if the Redis database contains any keys: `redis-cli dbsize`
- Check if any PCP metrics are in the Redis database: `pmseries disk.dev.read`
- Check if PCP metric values are in the Redis database: `pmseries 'disk.dev.read[count:10]'`
- Check the Grafana logs: `journalctl -e -u grafana-server`